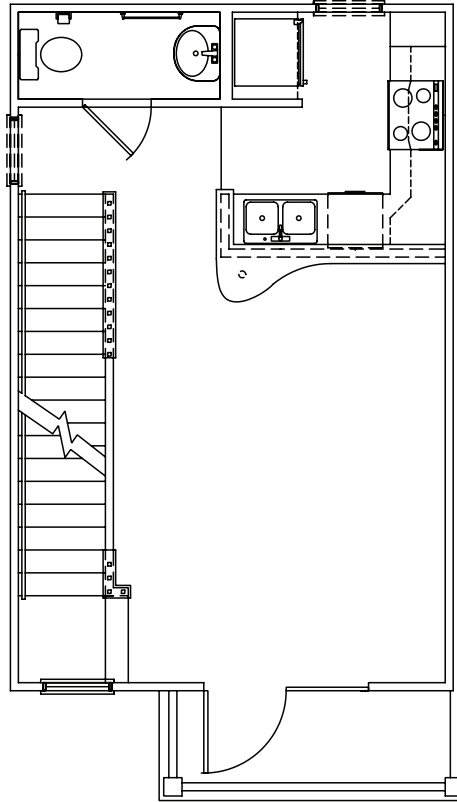


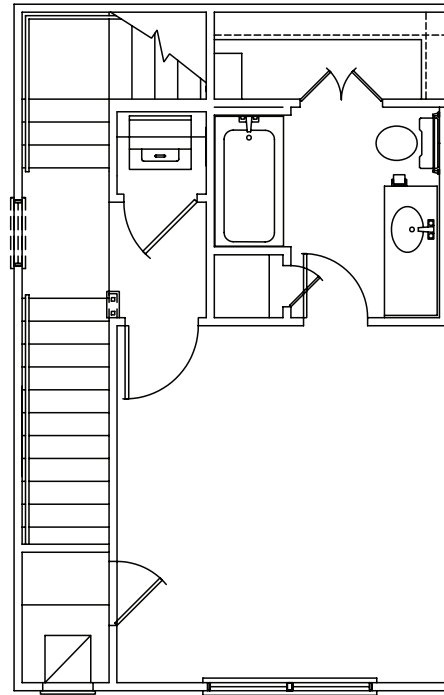
*garage*

- Designed for maximum storage
- Offers safe & convenient parking



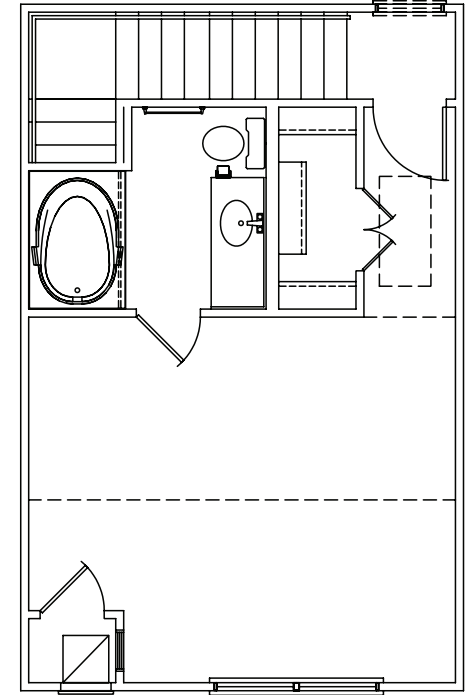
*first floor*

- 9' ceilings
- Open kitchen with breakfast bar
- 1/2 bath
- Stainless steel appliances
- Quality cabinets and granite counters



*second floor*

- Spacious master suite
- Tiled bathroom
- Convenient laundry location
- Walk-in closet



*third floor*

- Cathedral ceiling
- Jetted bathtub
- Walk-in closet

*the ardmore*  
*two bedroom*



**CITY PARK**  
TOWNHOMES

*Your Town. Your Home.*